

CATALOG

Compact Product Suite

Product Catalog



Table of contents

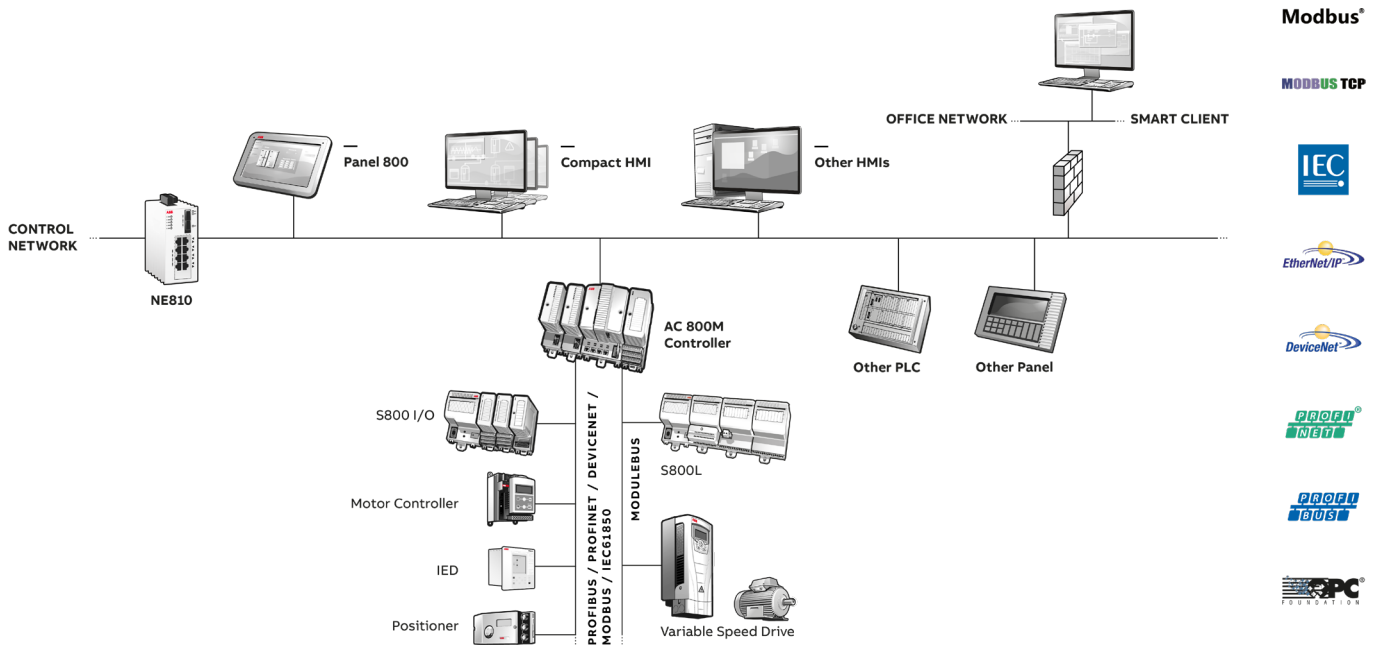
006	Compact Product Suite	01
007–009	Compact HMI 800 6.0.3.2	01
008	Control System Lifecycle Management Program	
008	Compact HMI Base System	
008	Signal Additions	
009	Snapshot Report	
009	HMI Clients	
009	Office Workplaces	
009	Dongles	
010–011	Compact HMI 800 6.0.3 Expansion	02
010	Signal Additions	
010	Snapshot Reports and Symbol Factory for PG2	
010	HMI Clients	
011	Office Workplaces	
011	Client Signal Expansions	
012 – 013	Compact HMI 800 6.0.1 Expansion	03
012	Signal Additions	
012	HMI Clients	

013	Office Workplaces	
013	Client Signal Expansions	
014–015	Compact HMI 800 5.1 Expansion	04
014	Signal Additions	
014	HMI System Options	
014	HMI Operator Workplace Clients	
015	HMI Remote Clients	
015	Office Workplaces	
015	Client Signal Expansions	
016–022	Panel 800 Version 6	05
017	Specifications Panel 800 Version 6	
019	Software Management Program	
019	Panel Builder 800	
020	Operator Panels	
022	Dongles	
022	Accessories	
023–043	AC 800M Processor Units	06
024	AC 800M Controllers selection guide	
030	AC 800M Processor Units	
032	Extra batteries	
032	Communication – Serial Interfaces on TP830	
032	Communication Interface selection guide	
034	Serial Communication Interface	
034	MODBUS TCP	
034	PROFIBUS DP	

035	PROFINET IO	
035	IEC 61850	
035	Ethernet/IP	
035	Advant Fieldbus 100	
036	MasterBus 300	
036	S100 I/O Bus	
036	Satt I/O	
036	INSUM	
037	DriveBus	
037	Bus Accessories	
038	AC 800M Power supply and Voters selection guide	
039	AC 800M Power supply and Voters	
039	AC 800M Mounting Rails	
041	User Documentation	
042	Compact Control Builder AC 800M 6.0	
042	Control System Lifecycle Support Program	
042	Upgrade Orders	
043	Media and lincense	
043	User Documentation	
044–066	S800 I/O Modules	07
045	S800 I/O modules	
046	S800L I/O modules	
047	S800 I/O modules selection guide	
048	S800 I/O Communication interfaces	

049	Extended warranty for S800 I/O Hardware	
049	ISA-S71.04 level G3 Compliance	
049	Field Communication Interface	
050	Upgrade Kit and Tool Cables	
051	S800 I/O Modules	
055	Pulse Counting Modules	
055	Label sets for I/O Modules	
056	S800 I/O Communication interfaces - TB and TUs	
059	Module Termination Units	
061	S800L I/O Modules	
061	Label sets for S800L I/O Modules	
062	ModuleBus Communication Parts	
063	AC 800M Power supply and Voters selection guide	
065	Power Supply	
065	User Documentation	
066–071	NE800 – Network components	08
067	NE800 selection guide	
069	Network switches	
069	Network routers/firewalls	
070	Network accessories	
070	Modular Transceivers (SFPs)	
071	Specifications Optical Transceivers	
072	Extended Warranty Time – S800 I/O, Fieldbus and AC 800M	
073	References	
075	Compact Hardware Selector	

Compact Product Suite



The Compact Product Suite is a comprehensive family of process automation and control products for your system integration and OEM business. It is the keystone to any automation task in the process industry where engineering efficiency matters.

These products can be combined as a tailored solution or, as standalones to complement an existing solution. However you use them, they will ensure high availability and enable increased productivity.

The Compact Product Suite is a set of automation building blocks that help you achieve the quality and productivity your production site deserves. It helps you focus on the missing block/component to add value to the production facility.

Whether it's process controllers, field interfaces or HMIs, our comprehensive suite of products enables automation with seamless perfection. When it comes to finding the best solution for your process, ABB's Compact Product Suite is your answer.

Every product in the Compact Product Suite portfolio provides the highest level of performance, security, connectivity and reliability in its class. This is the result of ABB's 50 plus years of proven expertise in automation control and technologies in the process industry. From the process field, to panels, to your central operator room, Compact Product Suite will fulfill all your automation needs.

Compact HMI 800 6.0.3.2

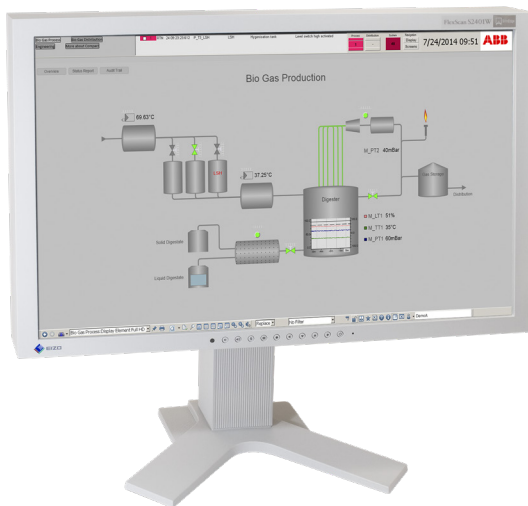
Compact HMI is an easy-to-use and fully equipped PC-based SCADA system for real-time operation of your plant. It offers the latest ergonomic design based on high performance graphics to take a full control of your process and data.

Based on the premium technology of ABB's System 800xA DCS with its leading object oriented engineering platform, it can be used in a variety of diverse industries, ranging from a single operator workstation, with 50 signals and scale up to applications with several thousand signals and multiple workplaces.

Designed with Microsoft Windows® standard of interaction, Compact HMI supports Windows 8.1, Windows 10 2016 LTSB, Windows Server 2012 R2 and Windows Server 2016. This provides exceptional ease of use, unmatched performance and cost savings.

Another feature is the high performance pre-fabricated, re-usable graphics library that is based on the industry best-practice principles to help quick creation and utilization of graphic displays.

Not only can Compact HMI directly interface to a large number of OPC-compliant controllers but also it comes with built in drivers to connect to major PLCs.



Control System Lifecycle Management Program

Control System Lifecycle Management Program




Automation Sentinel is the ABB control system lifecycle management program for the Extended Automation, Freelance, Compact Product Suite, Symphony Plus and OCS product lines. ABB recommends its customers to use Automation Sentinel for all its installed control systems. With this program, customers can keep control software up-to-date and maintain a flexible path forward to new system software technology. It provides services to maintain and continually advance and enhance your ABB control system installation. You may choose the level of maintenance and upgrade support that works best for your immediate needs and long-term production targets.

Read more about our Automation Sentinel Program and its many valuable services here:
<http://new.abb.com/control-systems/service/offerings/service-agreements>

Please contact your local sales representative for detailed information on the program and on how to order Automation Sentinel subscriptions.

Compact HMI Base System

Compact HMI Base System	Article no.
 <p>Compact HMI 800 6.0.3 Media (USB) Compact HMI 6.0.3.2 installation media on a write protected USB drive. Manuals as PDFs.</p> <p>Media can also be downloaded from ABB Library or MyABB/My Control System.</p> <p>*NO LICENSE INCLUDED*</p>	3BSE091823R1
<p>Compact HMI 800 6.0.3 Base License Base License for one combined HMI Operator and Engineering Workplace Server</p> <p>Plant Explorer, Aspect Server and Softpoint Server, Scheduler, Primary History Logs, PLC Connect, PLC Connect Dial-Up, Compact HMI Alarm Operations, SMS & Email Messaging, Audit trail, Advanced Access Control, Digital Signature, Graphics Builder and Symbol factory.</p> <p>*NO MEDIA INCLUDED*</p>	3BSE091827R1

Compact HMI Base System

Signal Additions

Signal Additions	Article no.
Compact HMI 6.0.3 Base System signals.	
50 Signals	3BSE091828R1
500 Signals	3BSE091829R1
2500 Signals	3BSE091830R1

Compact HMI Base System

Snapshot Reports

Compact HMI 6.0.3 Snapshot Reports	Article no.	
Makes it possible to create aspects that automatically executes a query and produces a report consisting of properties of objects in the system.	3BSE091831R1	

Compact HMI Base System

HMI Clients

HMI Operator Workplace Clients	Article no.	
Additional clients to a Compact HMI base system need to have an equal number of signals as the base system use.		
Operator Workplace Client – 200 Signals One additional Compact HMI 6.0.3 Operator Workplace Client, Process Graphics, Alarm and events, Trends, Reports.	3BSE091833R1	
Operator Workplace Client – 500 Signals One additional Compact HMI 6.0.3 Operator Workplace Client, Process Graphics, Alarm and events, Trends, Reports.	3BSE091834R1	
Operator Workplace Client – 1000 Signals One additional Compact HMI 6.0.3 Operator Workplace Client, Process Graphics, Alarm and events, Trends, Reports.	3BSE091835R1	
Operator Workplace Client – 2000 Signals One additional Compact HMI 6.0.3 Operator Workplace Client, Process Graphics, Alarm and events, Trends, Reports.	3BSE091836R1	
Operator Workplace Client – 5000 Signals One additional Compact HMI 6.0.3 Operator Workplace Client, Process Graphics, Alarm and events, Trends, Reports.	3BSE091837R1	
Operator Workplace Client – 10000 Signals One additional Compact HMI 6.0.3 Operator Workplace Client, Process Graphics, Alarm and events, Trends, Reports.	3BSE091838R1	

Compact HMI Base System

Office Workplaces

Office Workplaces	Article no.	
C HMI Smart Client Workplace Includes access to system information from the office network. Possibility to View Process Graphics 2 displays, Trend displays, Build/view business graphics, historic data.	3BSE091839R1	

Compact HMI Base System

Dongles

Dongles	Article no.	
License dongle for USB Port		
For use in 800xA or Compact HMI systems.	3BSE064644R1	

Compact HMI 800 6.0.3 Expansion

Compact HMI Base System

Signal Additions

Signal Additions	Article no.	
Signals additions for Compact HMI 6.0.3 Base System.		
50 Signals	3BSE091828R1	
500 Signals	3BSE091829R1	
2500 Signals	3BSE091830R1	

Compact HMI Base System

Snapshot Reports and Symbol Factory for PG2

Snapshot Reports and Symbol Factory for PG2	Article no.	
<p>Compact HMI 6.0.3 Snapshot Reports Makes it possible to create aspects that automatically executes a query and produces a report consisting of properties of objects in the system.</p>	3BSE091831R1	
<p>Compact HMI 6.0.3 Symbol Factory for PG2 Support for Symbol Factory process graphics 2 items in graphics displays.</p> <p>Symbol factory is included in new Compact HMI 6.0.3 base systems. This is only available for systems which has been upgraded to Compact HMI 6.0.3 and does not have a license for Symbol Factory.</p>	3BSE091832R1	

Compact HMI Base System

HMI Clients

HMI Operator Workplace Clients	Article no.	
Additional clients to a Compact HMI base system need to have an equal number of signals as the base system use.		
<p>Operator Workplace Client – 200 Signals One additional Compact HMI 6.0.3 Operator Workplace Client. Process Graphics, Alarm & events, Trends, Reports.</p>	3BSE091833R1	
<p>Operator Workplace Client – 500 Signals One additional Compact HMI 6.0.3 Operator Workplace Client. Process Graphics, Alarm & events, Trends, Reports.</p>	3BSE091834R1	
<p>Operator Workplace Client – 1000 Signals One additional Compact HMI 6.0.3 Operator Workplace Client. Process Graphics, Alarm & events, Trends, Reports.</p>	3BSE091835R1	
<p>Operator Workplace Client – 2000 Signals One additional Compact HMI 6.0.3 Operator Workplace Client. Process Graphics, Alarm & events, Trends, Reports.</p>	3BSE091836R1	

Compact HMI Base System

HMI Clients

HMI Operator Workplace Clients	Article no.	
Operator Workplace Client – 5000 Signals One additional Compact HMI 6.0.3 Operator Workplace Client. Process Graphics, Alarm & events, Trends, Reports.	3BSE091837R1	
Operator Workplace Client – 10000 Signals One additional Compact HMI 6.0.3 Operator Workplace Client. Process Graphics, Alarm & events, Trends, Reports.	3BSE091838R1	

Compact HMI Base System

Office Workplaces

C HMI Smart Client Workplace	Article no.	
Compact HMI 6.0.3 Smart Client Workplace. Includes access to system information from the office network. Possibility to view Process Graphics 2 displays, trend displays, build/view business graphics, historic data.	3BSE091839R1	

Compact HMI Base System

Client Signal Expansions

Client Signal Expansions	Article no.	
Compact HMI 6.0.3. Operator Workplace Client Signal Expansions from 200 to 10 000 signals.		
Client Signal Expansion 200 to 500 signals	3BSE091840R1	
Client Signal Expansion 500 to 1000 signals	3BSE091841R1	
Client Signal Expansion 1000 to 2000 signals	3BSE091842R1	
Client Signal Expansion 2000 to 5000 signals	3BSE091843R1	
Client Signal Expansion 5000 to 10000 signals	3BSE091844R1	

Compact HMI 800 6.0.1 Expansion

Compact HMI Base System

Signal Additions

Signal Additions	Article no.	
Signals additions for Compact HMI base system. (Max 10,000 signals)		
Compact HMI Base System signals, 50 50 Signals for Compact HMI 6.0.1 Base System.	3BSE084257R50	
Compact HMI Base System signals, 500 500 Signals for Compact HMI 6.0.1 Base System.	3BSE084257R500	
Compact HMI Base System signals, 2500 2500 Signals for Compact HMI 6.0.1 Base System.	3BSE084257R2500	

Compact HMI Base System

HMI Clients

HMI Operator Workplace Clients	Article no.	
It is possible to have up to 10 workplaces of any type in total.		
Operator Workplace Client, 200 signals One additional Compact HMI 6.0.1 Operator Workplace Client. Process Graphics, Alarm and events, Trends, Reports. Additional clients to a Compact HMI base system need to have an equal number of signals as the base system use.	3BSE084259R200	
Operator Workplace Client, 500 signals One additional Compact HMI 6.0.1 Operator Workplace Client. Process Graphics, Alarm and events, Trends, Reports. Additional clients to a Compact HMI base system need to have an equal number of signals as the base system use.	3BSE084259R500	
Operator Workplace Client, 1000 signals One additional Compact HMI 6.0.1 Operator Workplace Client. Process Graphics, Alarm and events, Trends, Reports. Additional clients to a Compact HMI base system need to have an equal number of signals as the base system use.	3BSE084259R1000	
Operator Workplace Client, 2000 signals One additional Compact HMI 6.0.1 Operator Workplace Client. Process Graphics, Alarm and events, Trends, Reports. Additional clients to a Compact HMI base system need to have an equal number of signals as the base system use.	3BSE084259R2000	
Operator Workplace Client, 5000 signals One additional Compact HMI 6.0.1 Operator Workplace Client. Process Graphics, Alarm and events, Trends, Reports. Additional clients to a Compact HMI base system need to have an equal number of signals as the base system use.	3BSE084259R5000	
Operator Workplace Client, 10000 signals One additional Compact HMI Operator Workplace Client. Process Graphics, Alarm and events, Trends, Reports. Additional clients to a Compact HMI base system need to have an equal number of signals as the base system use.	3BSE084259R5001	

Compact HMI Base System

Office Workplaces

C HMI Smart Client Workplace	Article no.
Compact HMI 6.0.1 Smart Client Workplace. Includes access to system information from the office network. Possibility to view Process Graphics 2 displays, trend displays, build/view business graphics and historic data.	3BSE084261R1

Compact HMI Base System

Client Signal Expansions

Client Signal Expansions	Article no.
Client Signal Expansion, 200 to 500 Compact HMI 6.0.1 Operator Workplace Client Signal Expansion from 200 to 500 Signals	3BSE084258R200
Client Signal Expansion, 500 to 1000 Compact HMI 6.0.1 Operator Workplace Client Signal Expansion from 500 to 1000 Signals	3BSE084258R500
Client Signal Expansion, 1000 to 2000 Compact HMI 6.0.1 Operator Workplace Client Signal Expansion from 1000 to 2000 Signals	3BSE084258R1000
Client Signal Expansion, 2000 to 5000 Compact HMI 6.0.1 Operator Workplace Client Signal Expansion from 2000 to 5000 Signals	3BSE084258R2000
Client Signal Expansion, 5000 to 10000 Compact HMI 6.0.1 Operator Workplace Client Signal Expansion from 5000 to 10000 Signals	3BSE084258R5000

Compact HMI 800 5.1 Expansion

Compact HMI Base System

Signal Additions

Signal Additions	Article no.	
Signal additions for Compact HMI 5.1 Base System. (Total max 10 000)		
50 Signals	3BSE064066R50	
500 Signals	3BSE064066R500	
2500 Signals	3BSE064066R2500	

Compact HMI Base System

HMI System Options

HMI System Options	Article no.	
Compact HMI Alarm Management Alarm Analysis and Alarm Shelving.	3BSE064069R1	

Compact HMI Base System

HMI Operator Workplace Clients

HMI Operator Workplace Clients	Article no.	
It is possible to have up to 10 workplaces of any type in total. Additional clients to a Compact HMI base system need to have a equal number of signals as the base system use.		
Operator Workplace Client – 200 Signals One additional Compact HMI Operator Workplace Client, Process Graphics, Alarm and events, Trends, Reports.	3BSE064068R200	
Operator Workplace Client – 500 Signals One additional Compact HMI Operator Workplace Client, Process Graphics, Alarm and events, Trends, Reports.	3BSE064068R500	
Operator Workplace Client – 1000 Signals One additional Compact HMI Operator Workplace Client, Process Graphics, Alarm and events, Trends, Reports.	3BSE064068R100	
Operator Workplace Client – 2000 Signals One additional Compact HMI Operator Workplace Client, Process Graphics, Alarm and events, Trends, Reports.	3BSE064068R2000	
Operator Workplace Client – 5000 Signals One additional Compact HMI Operator Workplace Client, Process Graphics, Alarm and events, Trends, Reports.	3BSE064068R5000	
Operator Workplace Client – 10000 Signals One additional Compact HMI Operator Workplace Client, Process Graphics, Alarm and events, Trends, Reports.	3BSE064068R5001	

Compact HMI Base System

HMI Remote Clients

HMI Operator Workplace Remote Clients	Article no.	
Note: It is possible to have up to 10 workplaces of any type in total. Additional clients to a Compact HMI base system need to have a equal number of signals as the base system use.		
HMI Operator Workplace Remote Client - 200 Signals One additional Remote Compact HMI Operator Workplace Client. Process Graphics, Alarm and events, Trends, Reports.	3BSE064070R200	
HMI Operator Workplace Remote Client - 500 Signals One additional Remote Compact HMI Operator Workplace Client. Process Graphics, Alarm and events, Trends, Reports.	3BSE064070R500	
HMI Operator Workplace Remote Client - 1000 Signals One additional Remote Compact HMI Operator Workplace Client. Process Graphics, Alarm and events, Trends, Reports.	3BSE064070R1000	
HMI Operator Workplace Remote Client - 2000 Signals One additional Remote Compact HMI Operator Workplace Client. Process Graphics, Alarm and events, Trends, Reports.	3BSE064070R2000	
HMI Operator Workplace Remote Client - 5000 Signals One additional Remote Compact HMI Operator Workplace Client. Process Graphics, Alarm and events, Trends, Reports.	3BSE064070R5000	
HMI Operator Workplace Remote Client - 10000 Signals One additional Remote Compact HMI Operator Workplace Client. Process Graphics, Alarm and events, Trends, Reports.	3BSE064070R5001	

Compact HMI Base System

Office Workplaces

Office Workplaces	Article no.	
C HMI Smart Client Workplace Includes access to system information from the office network. Possibility to view Process Graphics 2 displays, Trend displays, Build/view business graphics, historic data.	3BSE079194R10	

Compact HMI Base System

Client Signal Expansions

Client Signal Expansions	Article no.	
Compact HMI Operator Workplace Client Signal Expansion from 200 to 10 000 signals.		
Client Signal Expansion from 200 to 500 Signals	3BSE064067R200	
Client Signal Expansion from 500 to 1000 Signals	3BSE064067R500	
Client Signal Expansion from 1000 to 2000 Signals	3BSE064067R1000	
Client Signal Expansion from 2000 to 5000 Signals	3BSE064067R2000	
Client Signal Expansion from 5000 to 10000 Signals	3BSE064067R5000	

Panel 800 Version 6

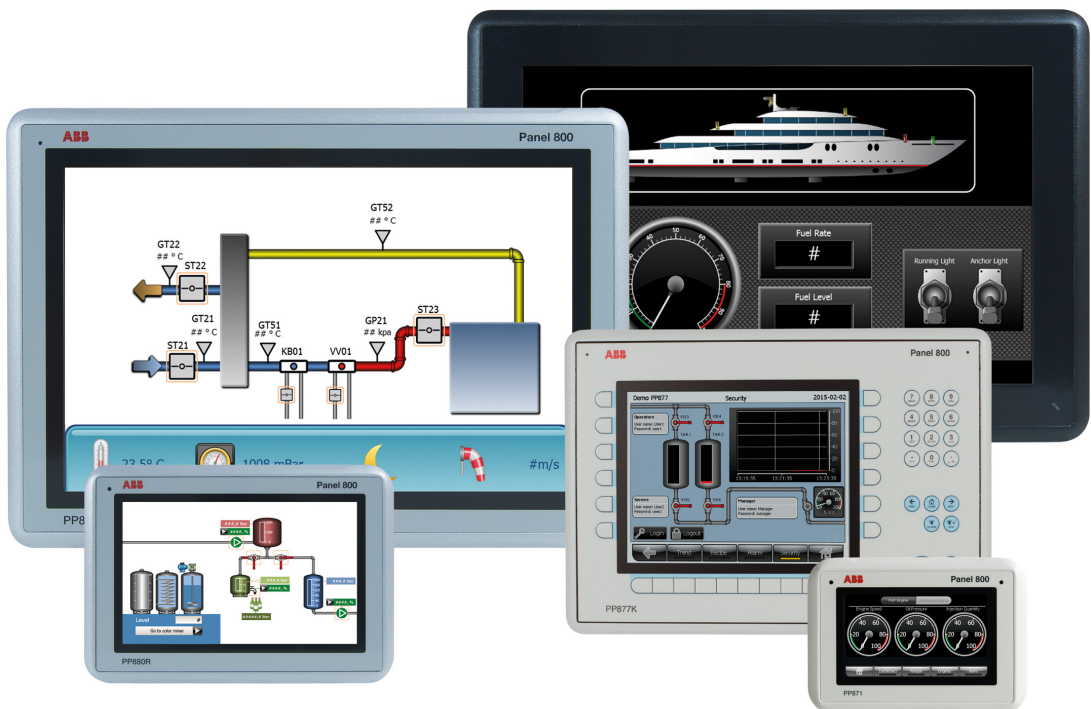
Panel 800 is a user-friendly, intuitive and ergonomic operator panel that combines slim, space saving dimensions with a comprehensive range of advanced functions.

All panels are equipped with advanced functionality for process and equipment control, maneuvered either by function keys located next to the screen or by touching the LCD display. Combined with market leading performance and stunning graphical ability, the Panel 800 erodes the line between ordinary Operator Panels and PC based HMIs.

Panel 800 is designed specifically for ABB Control Network and AC 800M controllers, but thanks to the extensive driver library, the Panel 800 is compatible with most makes of PLC and ABB legacy control systems. When using it together with AC 800M, certain unique features become available, such as integrated alarm handling with the controller.

Panel 800 consists of a modern powerful hardware platform, which enables a very limited mounting depth. The frame is made of powder-coated aluminum, giving the panels a very robust look-and-feel. Adding to the already well established feature rich version 6 our new Rugged and Black panels are designed to perform in challenging harsh environments. Whether it is heavy outdoor use, usage in areas with explosion risk, or ship bridge use in marine applications, they are ready to provide you with the information needed.

The Panel 800 Version 6 works primarily in an object-oriented way, making it easy to understand and use. Configuration is carried out on a PC using the Panel Builder configuration tool. The project can then be transferred and stored in the operator panel itself.



Specifications Panel 800 Version 6

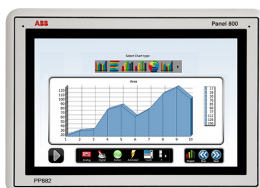
Standard panels



Panel	PP871	PP874	PP877	PP874K	PP877K
Display size	4.3"	7"	10.4"	7"	10,4"
Display resolution, ratio	480 × 272 (16:9)	800 × 480 (16:9)	640 × 480 (4:3)	840 × 480 (16:9)	640 × 480 (4:3)
Processor	ARM9 (400 MHz)				
Main memory	128 MB (DDR2)				
External storage media	1 × SD card slot (or SDHC with latest image loaded)				
Dimension W×H×D (mm)	145 × 103 × 49	204 × 143 × 49	280 × 228 × 51	280 × 228 × 51	410 × 286 × 83
Net weight (kg)	0.5	0.8	1.5	1.7	3.8
Power supply	+24 VDC (18-32 VDC)				
Operating temperature	-10 to +60 °C				
Certification					
CE	CE			CE	
UL	UL 508			UL	
Marine	DNV			DNV	
RoHS compliance	EN 50581:2012				
WEEE compliance	DIRECTIVE/2012/19/EU				

Specifications Panel 800 Version 6

High performance panels



Panel	PP882	PP885
Display size	12.1"	15.4"
Display resolution, ratio	1280 x 800 (16:10)	
Processor	Intel® Atom (1.1GHz)	
Main memory	1 GB (DDR2)	
External storage media	1 × SD card slot (or SDHC with latest image loaded)	
Dimension W×H×D (mm)	340 × 242 × 79	410 × 286 × 83
Net weight (kg)	2.6	3.85
Power supply	+24 VDC (18-32 VDC)	
Operating temperature	-10 to +50 °C	
Certification		
CE	CE	CE
UL	UL 508	UL 508
RoHS compliance	EN 50581:2012	
WEEE compliance	DIRECTIVE/2012/19/EU	

Specifications Panel 800 Version 6

Black panels

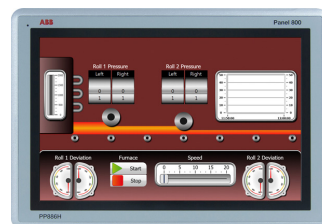
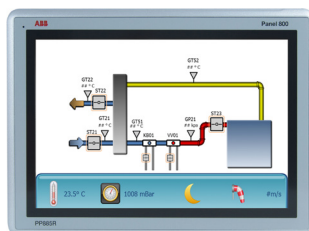
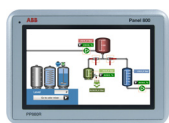


Panel	PP874M	PP885M	PP885H
Display size	7"	15.4"	15.4"
Display resolution, ratio	800 x 480 (16:9)	1280 x 800 (16:10)	
Processor	ARM9 400MHz	1.0 GHz Intel® Atom™	
Main memory	128 MB	1 GB	
External storage media	1 x SD card slot (or SDHC with latest image loaded)		
Dimension W×H×D (mm)	204 x 143 x 52.2	410 x 286 x 83	
Net weight (kg)	0.8	4.4	
Power supply	24 VDC (18-32 VDC)		
Operating temperature	-15 to +55 °C		
Certification			
CE	EN61000-6-4, EN61000-6-2		
UL	UL/cUL 508	UL/cUL 61010-2-201 (replacement for UL 508)	
Marine	DNV, GL, ABS, LR, KR	DNV, GL, ABS, LR	
RoHS compliance	EN 50581:2012		
WEEE compliance	DIRECTIVE/2012/19/EU		

05

Specifications Panel 800 Version 6

Rugged panels

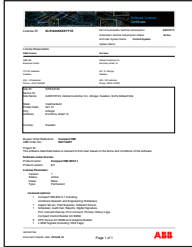


Panel	PP880R	PP885R	PP886H
Display size	7"	15.4"	15.4"
Display resolution, ratio	800 x 480 (16:9)	1280 x 800 (16:10)	
Processor	1.0 GHz Intel® Atom™		1.6 GHz Intel® Atom™
Main memory	1 GB		
External storage media	1 x SD card slot (or SDHC with latest image loaded)		
Dimension W×H×D (mm)	204 x 143 x 73	410 x 286 x 83	
Net weight (kg)	1.4	4.7	
Power supply	12 or 24 VDC (10-32 VDC)		
Operating temperature	-30 to +70 °C		
Certification			
CE	EN61000-6-4, EN61000-6-2		
UL	UL/cUL 61010-2-201 (replacement for UL 508), UL50E Type 4X Outdoor		
Marine	DNV, GL, ABS, LR, KR	DNV, GL, ABS, LR	
Hazardous	UI/cUL 12.12.01 (UL1604 replacement) Class I Div 2, ATEX (Zone 2), IECEx Ex nA IIC Gc, IEC 60079-0 and IEC 60079-15		
RoHS compliance	EN 50581:2012		
WEEE compliance	DIRECTIVE/2012/19/EU		

Panel 800 Version 6

Software Management Program

Control System Lifecycle Management Program



Automation Sentinel is the ABB control system lifecycle support program. An introductory trial period to the Automation Sentinel program will be included, at no additional cost, with each new ABB control system software delivery.

Please contact your designated Automation Sentinel responsible for any questions or please refer to the Automation Sentinel product guide for detailed information on the program and on how to calculate and order Automation Sentinel subscriptions.

Read more about our Automation Sentinel Program and its many valuable services here: <http://new.abb.com/control-systems/service/offerings/service-agreements>

Upgrade Orders	Article no.
<p>Panel Builder 800 Version 6, upgrade Media folder with Panel Builder 800 Version 6 containing the latest version of:</p> <ul style="list-style-type: none"> • Panel Builder 800 Version 6 • Panel 800 Runtime • Firmware for panels • Manuals as pdf-files • Release Notes • Mouse Pad • Renewed license <p>This item can be ordered by users with a valid Automation Sentinel agreement for Panel Builder 800 Version 5.</p>	3BSE069301R1

Panel 800 Version 6



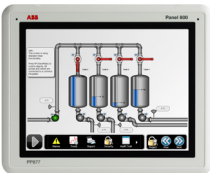
Panel Builder 800


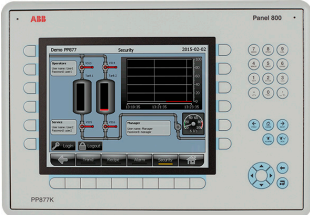
Panel Builder 800	Article no.
<p>Panel Builder 800 is the engineering tool for Panel 800.</p> <p>Panel Builder 800 Version 6 Media folder with Panel Builder 800 Version 6 containing the latest version of:</p> <ul style="list-style-type: none"> • Panel Builder 800 Version 6 • Panel 800 Runtime • Firmware for panels • Manuals as pdf-files • Release Notes • Mouse Pad • License for one Panel Builder 800 Version 6 	3BSE069300R1

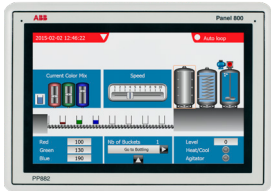
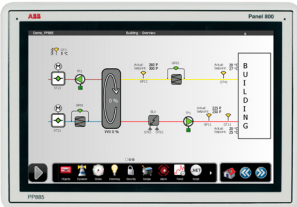





Panel 800 Version 6

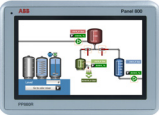
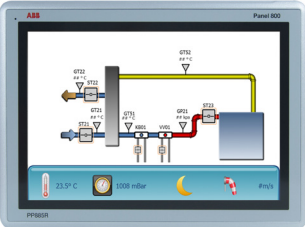

Operator Panels

Standard Touch Panels		Article no.
	<p>PP871 Touch panel 4.3" TFT 480 x 272 (16:9) Requires Panel Builder 800 Version 6 for configuration.</p> <p>To protect the front, it's recommended to use the RX871 Touch cover.</p>	3BSE069270R2
	<p>PP874 Touch panel 7" TFT 800 x 480 (16:9) Requires Panel Builder 800 Version 6 for configuration.</p> <p>To protect the front, it's recommended to use the RX874 Touch cover.</p>	3BSE069271R2
	<p>PP877 Touch panel 10.4" TFT 640 x 480 (4:3) Requires Panel Builder 800 Version 6 for configuration.</p> <p>To protect the front, it's recommended to use the RX877 Touch cover.</p>	3BSE069272R2

Standard Key Panels		Article no.
	<p>PP874K Key panel 7" TFT 840 x 480 widescreen (16:9) Requires Panel Builder 800 Version 6 for configuration.</p> <p>To protect the front, it's recommended to use the RX874K Touch cover.</p>	3BSE069273R1
	<p>PP877K Key panel 10.4" TFT 640 x 480 (4:3) Requires Panel Builder 800 Version 6 for configuration.</p> <p>To protect the front, it's recommended to use the RX877K Touch cover.</p>	3BSE069274R1

High Performance Touch Panels		Article no.
	<p>PP882 High performance touch panel 12.1" TFT 1280 x 800 (16:10) Requires Panel Builder 800 Version 6 for configuration.</p> <p>To protect the front, it's recommended to use the RX882 Touch cover.</p>	3BSE069275R1
	<p>PP885 High performance touch panel 15.4" TFT 1280 x 800 (16:10) Requires Panel Builder 800 Version 6 for configuration.</p> <p>To protect the front, it's recommended to use the RX885 Touch cover.</p>	3BSE069276R1

Black Touch Panels	Article no.	
 <p>PP874M Black touch panel 7" TFT 800 x 480 widescreen (16:9) Requires Panel Builder 800 Version 6 for configuration.</p> <p>To protect the front, it's recommended to use the RX874 Touch cover.</p>	3BSE069279R1	
 <p>PP885M Black touch panel 15.4" TFT 1280 x 800 widescreen (16:10) Requires Panel Builder 800 Version 6 for configuration.</p> <p>To protect the front, it's recommended to use the RX885 Touch cover.</p>	3BSE069280R1	
 <p>PP885H Black touch panel 15.4" High Brightness 1000 cd/m² TFT 1280 x 800 widescreen (16:10) Requires Panel Builder 800 Version 6 for configuration.</p> <p>To protect the front, it's recommended to use the RX885 Touch cover.</p>	3BSE069281R1	

Rugged Touch Panels	Article no.	
 <p>PP880R Rugged touch panel 7" TFT 800 x 480 widescreen (16:9) Requires Panel Builder 800 Version 6 for configuration.</p> <p>To protect the front, it's recommended to use the RX874 Touch cover.</p>	3BSE069295R1	
 <p>PP885R Rugged touch panel 15.4" TFT 1280 x 800 widescreen (16:10) Requires Panel Builder 800 Version 6 for configuration.</p> <p>To protect the front, it's recommended to use the RX885 Touch cover.</p>	3BSE069296R1	
 <p>PP886H Rugged touch panel 15.4" High Brightness 1000 cd/m² TFT 1280 x 800 widescreen (16:10) Requires Panel Builder 800 Version 6 for configuration.</p> <p>To protect the front, it's recommended to use the RX885 Touch cover.</p>	3BSE069297R1	

Panel 800 Version 6

Dongles

Dongles	Article no.
Requires Panel 800 Runtime Version 6 to be installed on the PC. The USB dongle enables the runtime and the amount of signals. Enables the possibility to run Panel 800 version 6 applications in a PC, using Panel 800 runtime.	
Panel 800 Version 6 dongle 250 tags.	3BSE069282R1
Panel 800 Version 6 dongle 2000 tags.	3BSE069283R1
Panel 800 Version 6 dongle 4000 tags.	3BSE069284R1


Panel 800 Version 6

Accessories

Communication Interface for Panel 800	Article no.
CB802 Profibus DP Communication Interface PROFIBUS DP slave expansion module for Panel 800 Version 6 panels. Not possible to use for PP885M, PP885H, PP880R, PP885R nor PP886H. Not marine certified.	3BSE069285R1
CB810 USB to Ethernet adapter for programming USB to Ethernet adapter with software. Cross over Ethernet patch cable included.	3BSE042255R1

Connection Cables for Panel 800	Article no.
TK858V002 Adapter cable (CAB107) Adapter cable RS232 - RS485 0.2 m 9 pin D-Sub to 25 pin D-Sub. For using 5.1 RS422/485 cables on Version 6 panels.	3BSE069474R1
TK859V000 Gender changer Gender changer 9 pin D-Sub male/male.	3BSE069475R1
TK860V001 Splitter cable (CAB 109) Splitter cable Version 6 panel. Y-split cable to utilize more than two COM ports on Version 6 panels.	3BSE069476R1

Front Protections	Article no.
Plastic cover, front protections can be used to protect the screen of Panel 800 panels.	
RX871 Touch cover for PP871	3BSE069286R1
RX874 Touch cover for PP874 Also possible to use for PP874M and PP880R	3BSE069287R1
RX877 Touch cover for PP877	3BSE069288R1
RX874K Key cover for PP874K	3BSE069289R1
RX877K Key cover for PP877K	3BSE069290R1
RX882 Touch cover for PP882	3BSE069291R1
RX885 Touch cover for PP885 Also possible to use for PP885R, PP885M, PP885H, PP886H	3BSE069292R1

Miscellaneous	Article no.
 MB802V2 SD card 2GB Secure Digital memory card 2GB Industrial grade for Version 6 panels.	3BSE069477R1



AC 800M Processor Units

CPU Modules

Several CPU modules are available that vary in terms of processing power, memory size, and redundancy support. Each CPU module is equipped with built in Ethernet port(s) for communication with other controllers and for interaction with operators, engineers, managers, and higher level applications. These ports can be configured for redundancy for those cases where availability is of paramount importance. It is also equipped with two RS-232C ports that can be used for point-to-point communication with programming/debugging tools and with third-party systems and devices.

The AC 800M controller can be configured with Compact Control Builder.

Communication & I/O Modules

To each CPU module, a number of communication and I/O modules can be added, for example:

- Additional RS-232C ports
- PROFIBUS DP, PROFINET IO
- DeviceNet
- IEC 61850
- Ethernet IP
- MasterBus 300
- MODBUS TCP
- S100 I/O
- S800 I/O



AC 800M controller with CI modules on left side and S800 IO module on right side



AC 800M controller PM891

AC 800M Controllers selection guide

Features / CPUs	PM851A	PM856A	PM858	PM860A	PM862
Processor Unit	PM851AK01 incl: 1 PM851 CPU and required optional items	PM856AK01 incl: 1 PM856 CPU and required optional items	PM858K01 incl: 1 PM858 CPU and required optional items PM858K02 incl: 2 PM858K01	PM860AK01 incl: 1 PM860 CPU and required optional items	PM862K01 incl: 1 PM862 CPU and required optional items. PM862K02 incl: 2 PM862K01
Optional items (partly included in Processor Units, see Price List)	TP830 Baseplate, TP850 CEX-bus term., TK850 CEX-bus cable, TB807, Modulebus term, Battery RAM backup, TB852/TB853 RCU-link term, TB851/TB855/TB856 RCU-link cable, SB822 External Battery Unit, TK212A Tool cable, TC562 Short Distance Modem, TK853V020 Modem cable, BC810K02, BC820K02, CEX-bus Interconnection unit; TK851V010 Connection cable, SD831/SD832/SD833 Power Supply, SS832 Voting Unit, Mains Breaker Kit.				
Clock frequency	24 MHz	24 MHz	33 MHz	48 MHz	67 MHz
Memory (RAM)	8 MB	8 MB	16MB	8 MB	32 MB
From 5.1 FP4	12 MB	16 MB		16 MB	
RAM available for application	2.282 MB	2.282 MB	7.147 MB	2.282 MB	23.521 MB
From 5.1 FP4	6.253 MB	10.337 MB		10.346 MB	
Processor type	MPC860	MPC860	MPC866	MPC860	MPC866
Flash memory for storage of application and data	Yes	Yes	Yes	Yes	Yes
CPU redundancy support	No	No	Yes	No	Yes
Switch over time in red. conf.	-	-	max 10 ms	-	max 10 ms
Performance, 1000 boolean operations (a:=b and c)	0.46 ms	0.46 ms	0.36 ms	0.23 ms	0.18 ms
No. controllers per control projects	32				
No. of applications per control project	1024				
No. of applications per controller	32				
No. of programs per application	64				
No. of tasks per controller	32				
Number of different cycle times	32				
Cycle time per application programs	Down to 1 ms				
Flash PROM for firmware storage	2 MB	2 MB	4 MB	2 MB	4 MB
Power supply	24 V DC (19.2-30 V DC) max 5 % ripple acc. to IEC 61131-2				
Power consumption +24 V	typ/max 180/300 mA	typ/max 180/300 mA	typ/max 210/360 mA	typ/max 180/300 mA	typ/max 210/360 mA
Power dissipation	typ 4.32 W	typ 4.32 W	typ 5.1 W	typ 4.32 W	5.1 W
Power Reservoir	Internal 5 ms power reservoir, sufficient for the CPU to make a controlled power down				
Power supply connector	Detachable 4-pole screw terminal block				
Redundant power supply status inputs	Yes: 2 inputs designated SA, SB (Max 30 V, high level >15 V, low level < 8 V)				
Built-in back-up battery	Type: Lithium, 3.6 V, 0.95 Ah, size 1/2 AA, 0.3 g Lithium content				
Real-time clock stability	100 ppm (approx. 1 h/year)				
Clock synchronization	1 ms between AC 800M controllers by CNCP protocol				
Comm. modules on CEX bus	1	12	12	12	12
Supply current on CEX bus	Supply current: Max 24 V - 2.4 A (fuse 3.15 A fast, PM891 has an embedded auto fuse)				
I/O clusters on Modulebus with non-redundant CPU	1 el. + 1 opt.	1 el. + 7 opt.	1 el. + 7 opt.	1 el. + 7 opt.	1 el. + 7 opt.
I/O clusters on Modulebus with redundant CPU	NA	NA	0 el. + 7 opt.	NA	0 el. + 7 opt.

Features / CPUs	PM851A	PM856A	PM858	PM860A	PM862
I/O capacity on Modulebus with non-redundant/redundant CPU	Max 24/NA I/O modules	Max 96/NA I/O modules	Max 96/84 I/O modules	Max 96/NA I/O modules	Max 96/84 I/O modules
Modulebus scan rate	0 - 100 ms (actual time depending on number of I/O modules)				
Supply current on Electrical Modulebus	Supply current: Max 24 V - 1.0 A (short circuit proof, fuse 2.0 A), Max 5 V - 1.5 A (short circuit proof)				
I/O capacity on PROFIBUS (remote I/O)	Max 99 I/O stations (max 62 redundant I/O stations), max 24 I/O modules per I/O station (max 12 redundant I/O pairs)				
Ethernet channels	1	2	2	2	2
Ethernet interface	Ethernet (IEEE 802.3), 10 Mbit/s, RJ-45, female (8-pole)				
Control Network protocol	MMS (Manufacturing Message Service) and IAC (Inter Application Communication)				
Recommended Control Network backbone	100 Mbit/s switched Ethernet				
No. of controllers on Control Network	max 50				
RS-232C interface	2 (one general, 1 for service tool)				
RS-232C interface (COM3) (non red.conf. only)	RS-232C, 75-19 200 baud, RJ-45 female (8-pole), not opto isolated, full RTS-CTS support				
RS-232C interface (COM4) (non red.conf. only)	RS-232C, 9 600 baud, RJ-45 female (8-pole), opto isolated, no RTS-CTS support				
Temperature	<ul style="list-style-type: none"> • Operating +5 to +55 °C (+41 to +131 °F) • Storage -40 to +70 °C (-40 to +158 °F) 				
Temperature changes	3 °C/minutes according to IEC/EN 61131-2				
Altitude	2000 m according to IEC/EN 61131-2				
Pollution degree	Degree 2 according to IEC/EN 61131-2				
Corrosion protection	G3 compliant to ISA 71.04				
Vibration	10 < f < 50 Hz: 0.0375 mm amplitude, 50 < f < 150 Hz: 0.5 g acceleration, 5 < f < 500 Hz: 0.2 g acceleration				
Emitted noise	< 55 dB (A)				
Shock, no package	150 m/s ² in 11 ms, 20 g in 3 ms				
Relative humidity	5 to 95 %, non-condensing				
Isolation voltage	Type test voltage: 500 V AC (corresponding to 700 V DC)				
Environmental conditions	Industrial				
Protection class	IP20 according to EN 60529, IEC 529				
Certificates and Standards ⁽¹⁾	CE- marking: Meets EMC directive 2004/108/EC acc. to EN 61000-6-4, EN 61000-6-2 and Low Voltage Directive acc. to EN 61131-2 Electrical Safety: EN 50178, IEC 61131-2, UL 508 Hazardous location: UL 60079-15, cULus Class 1, Zone 2, AEx nA IIC T4, ExnA IIC T4Gc X RoHS compliance: EN 50581:2012 WEEE compliance: DIRECTIVE/2012/19/EU				
TÜV Approval	No	No	No	No	No
Emission	Tested according to EN 61000-6-4 EMC – Generic Emission Standard, Part 2 – Industrial Environment				
Immunity	Tested according to EN 61000-6-2 EMC – Generic Immunity Standard, Part 2 – Industrial Environment				
Dimensions	Width 119 x Height 186 x Depth 135 mm (4.7 x 7.3 x 5.3 in.)				
Weight (including base)	1100 g (2.4 lbs)	1100 g (2.4 lbs)	1200 g (2.6 lbs)	1100 g (2.4 lbs)	1200 g (2.6 lbs)

(1) For detailed information on each module, please visit: www.compacthardwareselector.com

Features / CPUs	PM866A	PM891
Processor Unit	PM866AK01 incl: 1 PM866A CPU and required optional items PM866AK02 incl: 2 PM866AK01	PM891K01 incl: 1 PM891 CPU and required optional items PM891K02 incl: 2 PM891K01
Optional items (partly included in Processor Units, see Price List)	TP830 Baseplate, TP850 CEX-bus term., TK850 CEX-bus cable, TB807, Modulebus term, Battery RAM backup, TB852/TB853 RCU-link term, TB851/TB855/TB856 RCU-link cable, SB822 External Battery Unit, TK212A Tool cable, TC562 Short Distance Modem, TK853V020 Modem cable, BC810K02, BC820K02, CEX-bus Interconnection unit; TK851V010 Connection cable, SD831/SD832/SD833 Power Supply, SS832 Voting Unit, Mains Breaker Kit.	
Clock frequency	133 MHz	450 MHz
Memory (RAM) From 5.1 FP4	64 MB	256 MB
RAM available for application	51.389 MB	208.985 MB
Processor type	MPC866	MPC8270
Flash memory for storage of application and data	Yes	Yes
CPU redundancy support	Yes	Yes
Switch over time in red. conf.	max 10 ms	max 10 ms
Performance, 1000 boolean operations (a:=b and c)	0.09 ms	0.043 ms
No. controllers per control projects	32	
No. of applications per control project	1024	
No. of applications per controller	32	
No. of programs per application	64	
No. of tasks per controller	32	
Number of different cycle times	32	
Cycle time per application programs	Down to 1 ms	
Flash PROM for firmware storage	4 MB	16 MB
Power supply	24 V DC (19.2-30 V DC) max 5 % ripple acc. to IEC 61131-2	
Power consumption +24 V	typ/max 210/360 mA	typ/max 660/750 mA
Power dissipation typ.	5.1 W	15.8 W
Power Reservoir	Internal 5 ms power reservoir, sufficient for the CPU to make a controlled power down	
Power supply connector	Detachable 4-pole screw terminal block	
Redundant power supply status inputs	Yes: 2 inputs designated SA, SB (Max 30 V, high level >15 V, low level < 8 V)	
Built-in back-up battery	Type: Lithium, 3.6 V, 0.95 Ah, size 1/2 AA, 0.3 g Lithium content	No
Real-time clock stability	100 ppm (approx. 1 h/year)	50 ppm
Clock synchronization	1 ms between AC 800M controllers by CNCP protocol	
Comm. modules on CEX bus	12	12
Supply current on CEX bus	Supply current: Max 24 V - 2.4 A (fuse 3.15 A fast, PM891 has an embedded auto fuse)	
I/O clusters on Modulebus with non-redundant CPU	1 el. + 7 opt.	0 el. + 7 opt.
I/O clusters on Modulebus with redundant CPU	0 el. + 7 opt.	0 el. + 7 opt.
I/O capacity on Modulebus with non-redundant/redundant CPU	Max 96/84 I/O modules	Max 84/84 I/O modules
Modulebus scan rate	0 - 100 ms (actual time depending on number of I/O modules), 0 - 300 for PM865 and PM867	
Supply current on Electrical Modulebus	Supply current: Max 24 V - 1.0 A (short circuit proof, fuse 2.0 A), Max 5 V - 1.5 A (short circuit proof)	Not supported
I/O capacity on PROFIBUS (remote I/O)	Max 99 I/O stations (max 62 redundant I/O stations), max 24 I/O modules per I/O station (max 12 redundant I/O pairs)	

Features / CPUs	PM866A	PM891
Ethernet channels	2	2
Ethernet interface	Ethernet (IEEE 802.3), 10 Mbit/s, RJ-45, female (8-pole)	10/100 Mbit/s
Control Network protocol	MMS (Manufacturing Message Service) and IAC (Inter Application Communication)	
Recommended Control Network backbone	100 Mbit/s switched Ethernet	
No of controllers on Control Network	max 50	
RS-232C interface	2 (one general, 1 for service tool)	1 for service tool (COM 4)
RS-232C interface (COM3) (non red.conf. only)	RS-232C, 75-19 200 baud, RJ-45 female (8-pole), not opto isolated, full RTS-CTS support	Not supported
RS-232C interface (COM4) (non red.conf. only)	RS-232C, 9 600 baud, RJ-45 female (8-pole), opto isolated, no RTS-CTS support	
Temperature		
• Operating	+5 to +55 °C (+41 to +131 °F)	
• Storage	-40 to +70 °C (-40 to +158 °F)	
Temperature changes	3 °C/minutes according to IEC/EN 61131-2	
Altitude	2000 m according to IEC/EN 61131-2	
Pollution degree	Degree 2 according to IEC/EN 61131-2	
Corrosion protection	G3 compliant to ISA 71.04	
Vibration	10 < f < 50 Hz: 0.0375 mm amplitude, 50 < f < 150 Hz: 0.5 g acceleration, 5 < f < 500 Hz: 0.2 g acceleration	
Emitted noise	< 55 dB (A)	
Shock, no package	150 m/s ² in 11 ms, 20 g in 3 ms	
Relative humidity	5 to 95 %, non-condensing	
Isolation voltage	Type test voltage: 500 V AC (corresponding to 700 V DC)	
Environmental conditions	Industrial	
Protection class	IP20 according to EN 60529, IEC 529	
Certificates and Standards ⁽¹⁾	CE- marking: Meets EMC directive 2004/108/EC acc. to EN 61000-6-4, EN 61000-6-2 and Low Voltage Directive acc. to EN 61131-2 Electrical Safety: EN 50178, IEC 61131-2, UL 508 Hazardous location: UL 60079-15, cULus Class 1, Zone 2, AEx nA IIC T4, ExnA IIC T4Gc X RoHS compliance: EN 50581:2012 WEEE compliance: DIRECTIVE/2012/19/EU	
TÜV Approval	No	No
Emission	Tested according to EN 61000-6-4 EMC – Generic Emission Standard, Part 2 – Industrial Environment	
Immunity	Tested according to EN 61000-6-2 EMC – Generic Immunity Standard, Part 2 – Industrial Environment	
Dimensions	Width 119 x Height 186 x Depth 135 mm (4.7 x 7.3 x 5.3 in.)	Width 174 x Height 186 x Depth 94 mm
Weight (including base)	1200 g (2.6 lbs)	1600 g (3.5 lbs)

(1) For detailed information on each module, please visit: www.compacthardwareselector.com

Features	BC810	BC820
Article number	3BSE031155R1	3BSE071500R1
Redundancy	Yes	Yes
High Integrity	Yes	No
Performance	Hot swap supported	Hot swap supported
Power supply	Inputs designated L+ and L- 24 V nominal, variation between 19.2 V DC and 30 V DC.	
Power consumption +24 V typ/max	50 mA typical (70 mA max)	120 mA typical (200 mA max)
Power dissipation typ.	1.2 W typical	2.9 W typical
Temperature, Operating	+5 to +55 °C (+41 to +131 °F)	
Temperature, Storage	-40 to +70 °C (-40 to +158 °F)	
Relative humidity	5 to 95 %, non-condensing	
Protection class	IP20 according to EN60529, IEC 529	
CE- marking	Yes	
Electrical Safety	UL508	UL-certification pending
Hazardous location	cULus Class 1, Zone 2, AEx nA IIC T4, ExnA IIC T4Gc X	
Marine certificates	ABS, BV, DNV-GL, LR, RS, CCS	ABS, BV, DNV-GL, LR
RoHS compliance	EN 50581:2012	
WEEE compliance	DIRECTIVE/2012/19/EU	
Height	185 mm (7.3 in.)	185 mm (7.3 in.)
Width	59 mm (2.9 in.)	59 mm (2.9 in.)
Depth	127.5 mm (5.0 in.)	127.5 mm (5.0 in.)
Weight	1.5 kg (3.31 lbs) (BC810K02 package)	1.4 kg (3.1 lbs) (BC820K02 package)

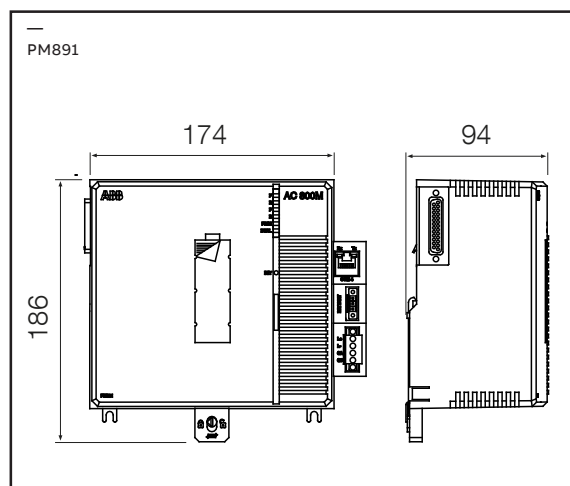
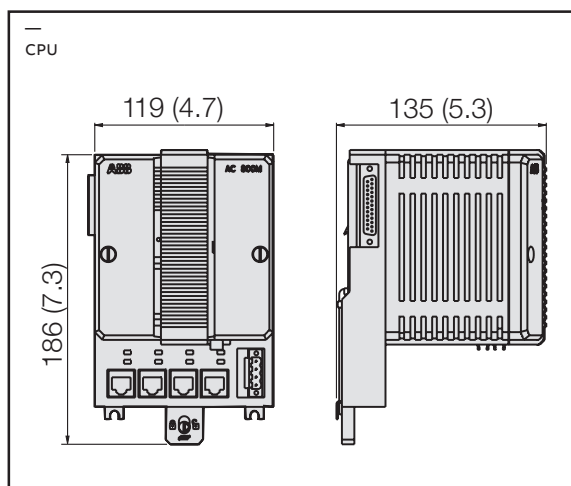
Supported Communication modules	RS-232 C	PROFIBUS DP	MB300	S100 I/O	INSUM	Drivebus
Module	CI853	CI854B	CI855	CI856	CI857	CI858
Article number	3BSE 018103R1	3BSE069449R1	3BSE018106R1	3BSE026055R1	3BSE018144R1	3BSE018135R1
Protocol	MODBUS RTU master, COMLI master/ slave, Siemens 3964R master, User defined protocols	DP-V1 (PA via Linking Device)	MasterBus 300	ABB's S100 I/O	IEEE 802.3	ABB's DriveBus
Master or slave	Master/slave	Master	Master/slave	Master	Master	Master
Number of channels	2	2	2	1	1	1 main, 2 aux
Max units on CEX bus	12	12	12	12	6	2
Transmission speed	75 - 19 200 b/s	9.6 - 12,000kbit/s	10 Mbit/s, 200 Datasets/s	-	10 Mbit/s	4 Mbit/s
Cable redundancy	No	Yes	Yes	No	No	No
Module redundancy	No	Yes	No	No	No	No
Hot Swap	Yes	Yes	Yes	Yes	Yes	Yes
Connectors	RJ-45 female (8-pin)	DB female (9-pin)	RJ-45 female (8-pin)	Miniribbon (36-pin)	RJ-45 female (8-pin)	Fiberoptic
24 V current consumption	typ 100 mA	typ 190 mA	typ 150 mA	typ 200 mA	typ 150 mA	typ 200 mA
Protection class	IP20 according to EN60529, IEC 529					
Certification (1)						
CE-marked	Yes	Yes	Yes	Yes	Yes	Yes
UL 508	Yes	Yes	Yes	Yes	Yes	Yes
UL 60079-15 (Class 1 Zone 2)	Yes	Yes	Yes	Yes	Yes	Yes
RoHS compliance	EN 50581:2012					
WEEE compliance	DIRECTIVE/2012/19/EU					
Dimensions	Width 58 x Height 186 x Depth 135 mm (2.3 x 7.3 x 5.3 in.)					
Weight (including base)	520 g (1.2 lbs)	700 g (1.5 lbs)	700 g (1.5 lbs)	600 g (1.3 lbs)	600 g (1.3 lbs)	700 g (1.5 lbs)

(1) For detailed information on each module, please visit: www.compacthardwareselector.com

Supported Communication modules	MODBUS TCP	IEC 61850	AF100	PROFINET IO	EtherNet/IP DeviceNet
Module	CI867	CI868	CI869	CI871	CI873
Article number	3BSE043660R1	3BSE048845R1	3BSE049110R1	3BSE056767R1	3BSE056899R1
Protocol	MODBUS TCP	IEC 61850	Advant Fieldbus 100	PROFINET IO	EtherNet/IP DeviceNet (via LD800DN)
Master or slave	Master/slave	Master	Slave	Master	Master
Number of channels	2	1	2	1	1
Max units on CEX bus	12	4	4	12	4
Transmission speed	10/100 Mbit/s (Ch1), 10 Mbit/s (Ch2)	10/100 Mbit/s	Up to 500 Kbit/s	10/100 Mbit/s	10/100 Mbit/s
Cable redundancy	No	No	Yes	No	No
Module redundancy	Yes	No	Yes	No	Yes
Hot Swap	Yes	Yes	Yes	Yes	Yes
Connectors	RJ-45 female (8-pin)	RJ-45 female (8-pin)	Phoenix (4-pin)	RJ-45 female (8-pin)	RJ-45 female (8-pin)
24 V current consumption	typ 160 mA	typ 160 mA	typ 160 mA	typ 160 mA	typ 160 mA
Protection class	IP20 according to EN60529, IEC 529				
Certification (1)					
CE-marked	Yes	Yes	Yes	Yes	Yes
UL 508	Yes	Yes	Yes	Yes	Yes
UL 60079-15 (Class 1 Zone 2)	Yes	Yes	Yes	Yes	Yes
RoHS compliance	EN 50581:2012				
WEEE compliance	DIRECTIVE/2012/19/EU				
Dimensions	Width 58 x Height 186 x Depth 135 mm (2.3 x 7.3 x 5.3 in.)				
Weight (including base)	700 g (1.5 lbs)	700 g (1.5 lbs)	700 g (1.5 lbs)	700 g (1.5 lbs)	700 g (1.5 lbs)

(1) For detailed information on each module, please visit: www.compacthardwareselector.com

Measurements



AC 800M Hardware

Hardware Upgrade orders

Hardware Upgrade orders

For Hardware Upgrade orders please send your inquiry to Service Center mail box: offer.selog@se.abb.com

ISA-S71.04 level G3 Compliance

Modules are compliant to ISA-S71.04 level G3, unless explicitly stated differently.

Extended Warranty for AC 800M Hardware

We can offer an extended warranty for one, two, or three years in addition to normal warranty conditions for AC 800M Hardware. See price list Extended Warranty 3BSE049908.

AC 800M Hardware

System Units

System Units




The Tool Cable TK212A is most useful when working with AC 800M. Please order a cable (Item P215) together with your first order of PM851AK01, PM856AK01, PM858K01, PM858K02, PM860AK01, PM861AK01, PM861AK02, PM862K01, PM862K02, PM864AK01, PM864AK02, PM865K01, PM865K02, PM866K01, PM866K02, PM866AK01, PM866AK02, PM867K01, PM867K02, PM891K01 or PM891K02.

06

AC 800M Hardware

AC 800M Processor Units

AC 800M Processor Units	Article no.	
 <p>PM851AK01 Processor Unit 24 Mhz and 12 MB. Package including:</p> <ul style="list-style-type: none"> • PM851A, CPU • TP830, Baseplate, width=115 mm • TB850, CEX-bus terminator • TB807, ModuleBus terminator • Battery for memory backup (4943013-6) • No license included 	3BSE066485R1	
<p>PM856AK01 Processor Unit 24 Mhz and 12 MB. Package including:</p> <ul style="list-style-type: none"> • PM856A, CPU • TP830, Baseplate, width=115 mm • TB850, CEX-bus terminator • TB807, ModuleBus terminator • Battery for memory backup (4943013-6) • No license included 	3BSE066490R1	
<p>PM858K01 Processor Unit 33 Mhz and 16 MB. Package including:</p> <ul style="list-style-type: none"> • PM858, CPU • TP830, Baseplate, width =115mm • TB850, CEX-bus terminator • TB807, ModuleBus terminator • TB852, RCU-Link terminator • Battery for memory backup (4943013-6) • No license included <p>Only compatible with 800xA 6.0.2, Compact Control Builder 6.0.0-1 and onwards. Please see Product Update for more information.</p>	3BSE082895R1	

800M Processor Units	Article no.	
 <p>PM858K02 Redundant Processor Unit 33 Mhz and 16 MB. Package including:</p> <ul style="list-style-type: none"> • 2 pcs PM858, CPU • 2 pcs TP830, Baseplate, width =115mm • 2 pcs TB807, ModuleBus terminator • 1 pcs TK850, CEX-bus expansion cable • 1 pcs TK851, RCU-Link cable • 2 pcs Battery for memory backup (4943013-6) • No license included <p>Only compatible with 800xA 6.0.2, Compact Control Builder 6.0.0-1 and onwards. Please see Product Update for more information.</p>	3BSE082896R1	
 <p>PM860AK01 Processor Unit 48 Mhz and 16 MB. Package including:</p> <ul style="list-style-type: none"> • PM860A, CPU • TP830, Baseplate, width=115 mm • TB850, CEX-bus terminator • TB807, ModuleBus terminator • Battery for memory backup (4943013-6) • No license included 	3BSE066495R1	
<p>PM862K01 Processor Unit 67 Mhz and 32 MB. Package including:</p> <ul style="list-style-type: none"> • PM862, CPU • TP830, Baseplate, width =115mm • TB850, CEX-bus terminator • TB807, ModuleBus terminator • TB852, RCU-Link terminator • Battery for memory backup (4943013-6) • No license included <p>Only compatible with 800xA 6.0.2, Compact Control Builder 6.0.0-1 and onwards. Please see Product Update for more information.</p>	3BSE076940R1	
<p>PM862K02 Redundant Processor Units Package including:</p> <ul style="list-style-type: none"> • 2 pcs PM862, CPU • 2 pcs TP830, Baseplate, width =115mm • 2 pcs TB807, ModuleBus terminator • 1 pcs TK850, CEX-bus expansion cable • 1 pcs TB851, RCU-Link cable • 2 pcs Battery for memory backup (4943013-6) • No license included <p>Only compatible with 800xA 6.0.2, Compact Control Builder 6.0.0-1 and onwards. Please see Product Update for more information.</p>	3BSE081636R1	
<p>PM866AK01 Processor Unit 133 Mhz and 64 MB. Package including:</p> <ul style="list-style-type: none"> • PM866A, CPU • TP830, Baseplate, width =115mm • TB850, CEX-bus terminator • TB807, ModuleBus terminator • TB852, RCU-Link terminator • Battery for memory backup (4943013-6) • No license included 	3BSE076939R1	
<p>PM866AK02 Redundant Processor Unit 133 Mhz and 64 MB. Package including:</p> <ul style="list-style-type: none"> • 2 pcs PM866A, CPU • 2 pcs TP830, Baseplate, width =115mm • 2 pcs TB807, ModuleBus terminator • 1 pcs TK850, CEX-bus expansion cable • 1 pcs TB851, RCU-Link cable • 2 pcs Battery for memory backup (4943013-6) • No license included 	3BSE081637R1	
 <p>PM891K01 Processor Unit 450 Mhz and 256 MB. Package including:</p> <ul style="list-style-type: none"> • PM891 CPU Module • TB850, CEX-bus terminator • TB853, RCU Control Link Terminator • No license included 	3BSE053241R1	